



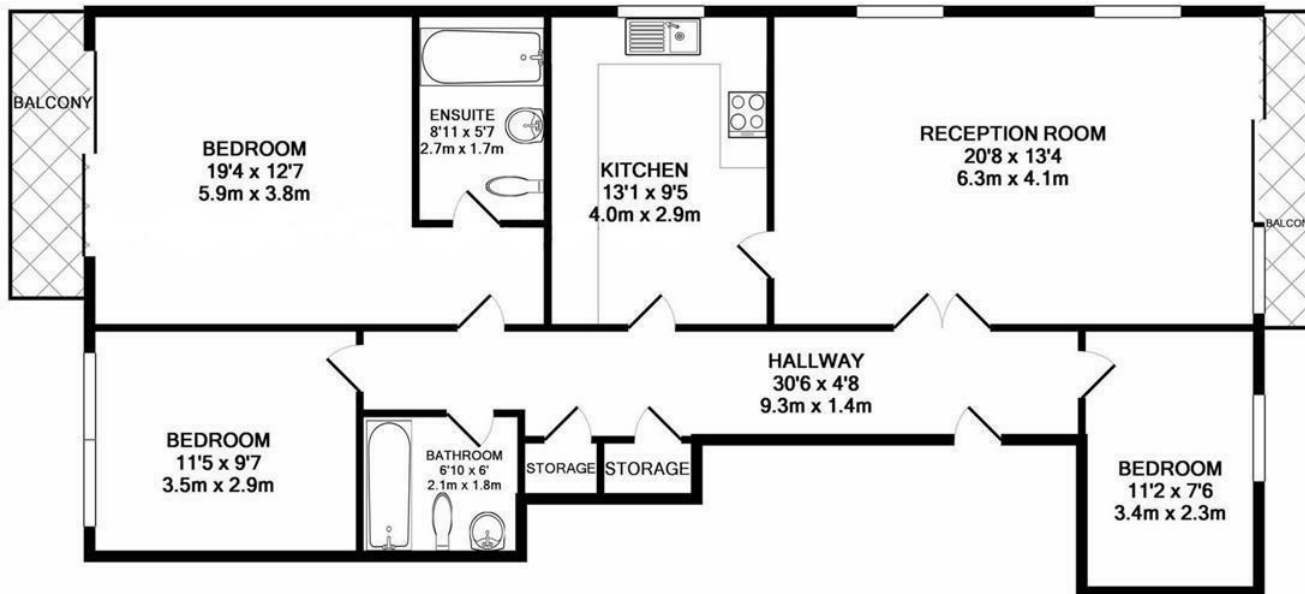
HIGHVIEW HOUSE

LONDON, NW4 2TH

£590,000
LEASEHOLD

We are delighted to offer a 3 bedroom 2nd floor flat overlooking Hendon Park. These modern flats are situated within two minutes walk from Hendon Central, Brent Street shops, and close to Brent Cross and other transport links.

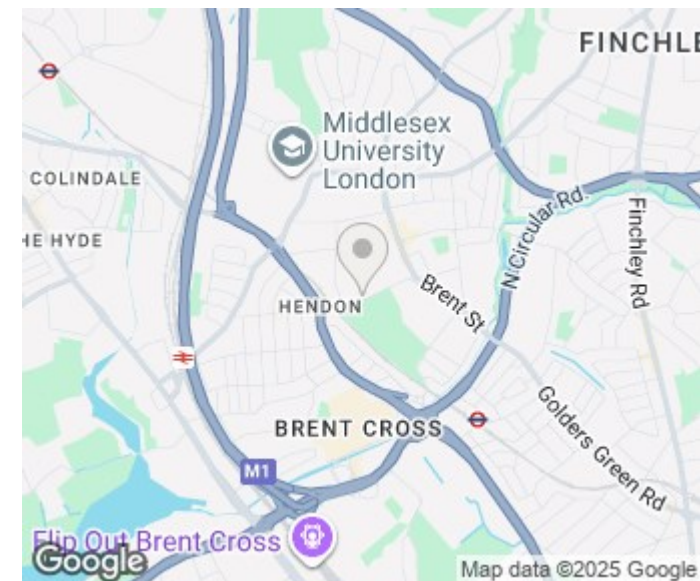
LONDON
HOMESTEAD



TOTAL APPROX. FLOOR AREA 1076 SQ.FT. (100.0 SQ.M.)

Whilst every attempt has been made to ensure the accuracy of the floor plan contained here, measurements of doors, windows, rooms and any other items are approximate and no responsibility is taken for any error, omission, or mis-statement. This plan is for illustrative purposes only and should be used as such by any prospective purchaser. The services, systems and appliances shown have not been tested and no guarantee as to their operability or efficiency can be given

Made with Metropix ©2019



Energy Efficiency Rating		
	Current	Potential
Very energy efficient - lower running costs		
(92 plus) A		
(81-91) B		
(69-80) C		
(55-68) D		
(39-54) E		
(21-38) F		
(1-20) G		
Not energy efficient - higher running costs		
England & Wales	EU Directive 2002/91/EC	

Agents Note: Whilst every care has been taken to prepare these particulars, they are for guidance purposes only. All measurements are approximate and are for general guidance purposes only and whilst every care has been taken to ensure their accuracy, they should not be relied upon and potential buyers/tenants are advised to recheck the measurements

Hendon
Highview House
6 Queens Road
Greater London
NW4 2TH

02084 571188
enquiries@londonhomestead.co.uk

**LONDON
HOMESTEAD**